

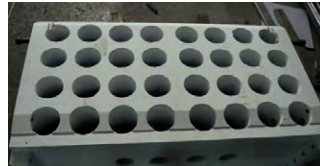


Competitor Die Cutters

Platform Comparison



Equipped with a solid upper platform.

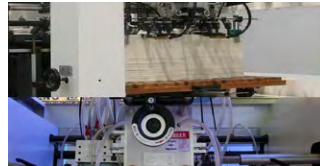


Equipped with hollow core upper platform.

Feeder Comparison



German technology, provided by Mabeg, adopts the four-lift and five-feed paper delivery method, and the paper feed suction can extend to both sides, and is equipped with a side air device.



Equipped with three-lift and four-delivery paper delivery method

Index Drive Comparison

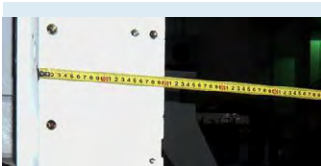


The length is 26.8" and the center distance is 9.8". The load is large and the high-speed die-cutting is stable.

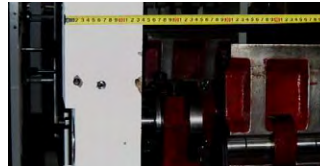


Length is 22.0" and center distance 7.9".

Main Wall Comparison



7.9" thick steel wall panel.



5.5" thick cast iron wall panel

Worm Gear Box & Flywheel Comparison



With ribs to strengthen the base, and strengthen the box structure. Flywheel side worm box is 3.1" and 3.5" on the other side. Flywheel diameter 27.6".

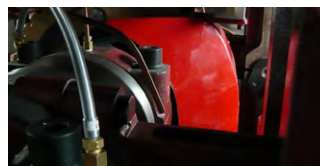


Ordinary box structure. 2.4" on the flywheel side of the worm box wall panel, and 1.8" on the other side. Domestic counterparts Flywheel diameter 25.6".

Lubrication Comparison



The pipe for the lubrication system adopts the injection lubrication method of metal materials such as copper



The pipe for the lubrication system adopts spray lubrication method of copper, aluminum or hose material

Micro Adjustment of Die Cutting Plate Comparison

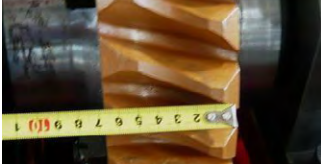


Can be adjusted by ± 1 mm to align thin plate to die.



Not Available.

Turbine Comparison



Worm gear thickness is 2.8".



Worm gear thickness is 2.6"

Base Comparison



The height of the whole machine is risen by 9.4" and the base is poured with cast steel.



The overall heightened 6.7" and base via I-beam.

Transmission Comparison



By gear.



By belt.

Feeding Belt Speed Adjustment Comparison



Capable



Not Capable

Side Lay Comparison



One-piece push-pull lay on both the operations side and drive side



Legacy design mechanical pull lay, The operation side is pull lay, and drive side is push lay.